

APPLICATION SOLUTION

Waterproofing for Wet areas using **Revinex® Flex FP**



Field of application

Waterproofing for Wet areas using **Revinex® Flex FP**, **Neotex® PU Joint** to seal joints.
Hydrophylic expansion tape for drain pipes, Non-shrink pouring grout.

Product Description

Hversatile Cementitious waterproofing system, suitable for concrete, masonry, under tiles and other surfaces. By mixing components of system, **Revinex® Flex** (component A) with water or appropriate polymer (component B) can be used for different waterproofing applications depending on the specific requirements of the item.

Application

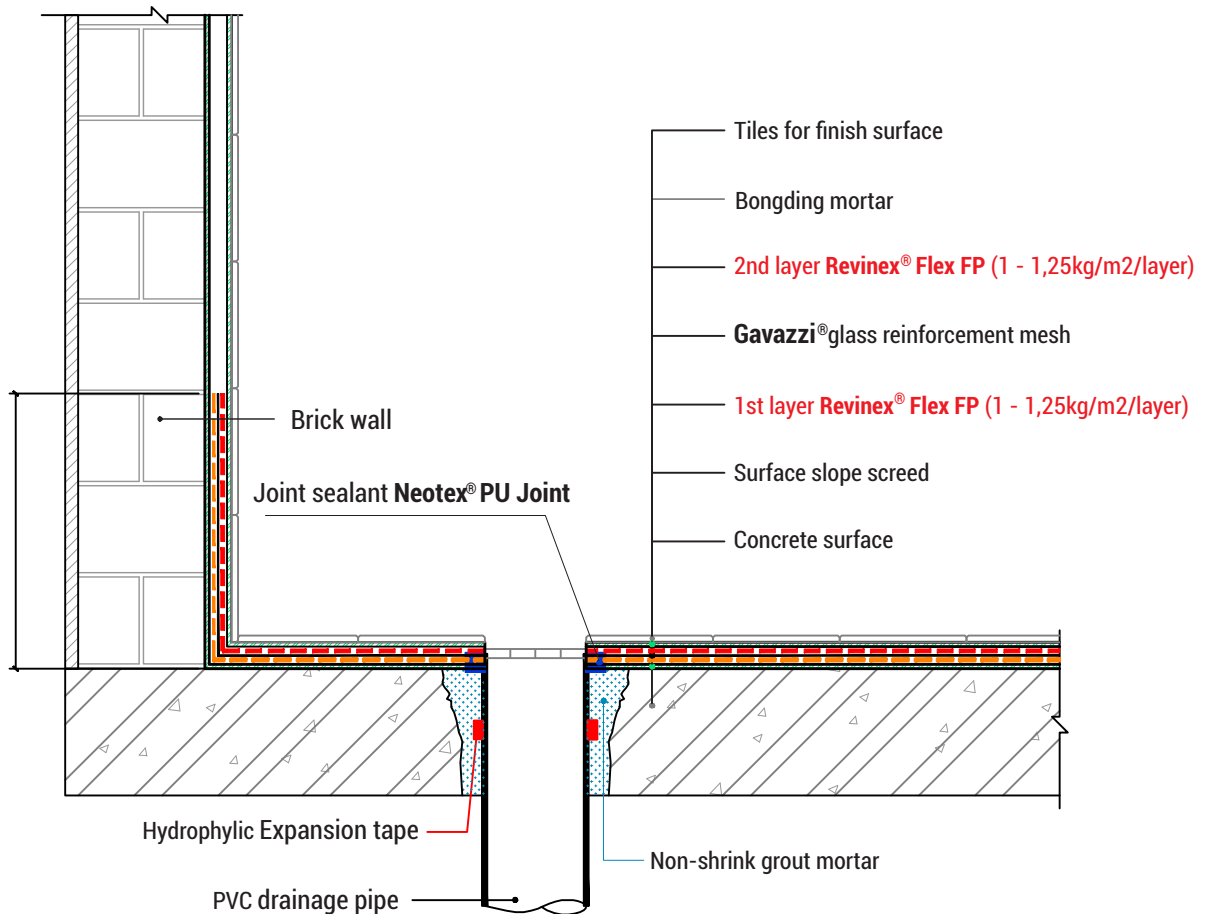
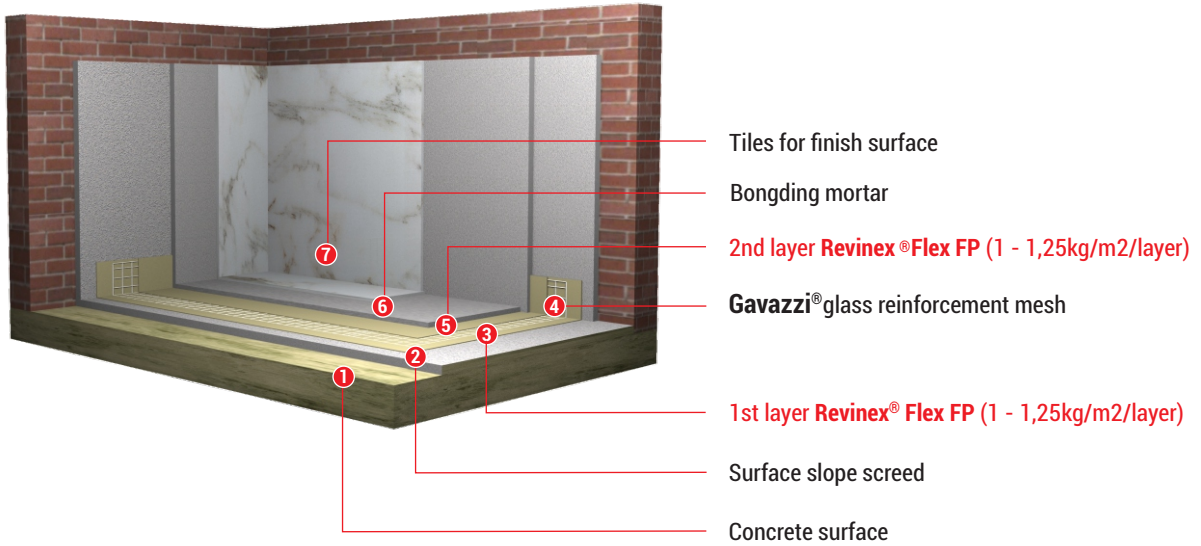
Waterproofing systems for roof floors, wet areas, basements, walls, tunnels, tanks (not containing portable water) or conventional waterproofing when enhanced adhesion is required. Waterproofing the inside walls and floors of basement to resist mild negative water pressure. Waterproof and protect the outer surface of wall submerged under the ground.

Advantage characteristics

- Economical, easy to apply
- Good adhesion even to wet surfaces
- Good adhesion to solid, firm surfaces
- It is an effective barrier to carbonation
- Non-toxic
- Non-corrosive
- Light elastic
- Can be applied by spraying


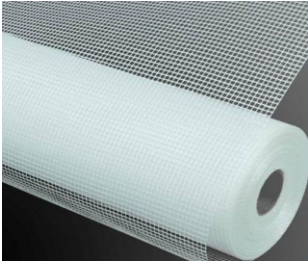






Waterproofing for Wet areas using **Revinex® Flex FP**

System structure



Waterproofing for Wet areas using Revinex® Flex FP

Product images and Application tools

		
Revinex® Flex FP	Gavazzi® glass mesh	Expansion tape
		
Neotex® PU Joint	Pressure sprayer	Airless spray
		
Brush – Roller	Stirrer	

Application

• APPLICATION REVINEX FLEX FP

▪ Surface Preparation

- The surface must be clean, free from loose materials, contaminated agents, grease or oil.
- The surface must be moistened entirely before applying waterproofing mortar, but not ponding water.
- Holes or defects in concrete surface must be repaired with **Neorep** and **Revinex**. It is best to be primed with a mixture of **Revinex**+ water (ratio 1:3), remove excess water before application.

▪ Mix

- Stir with a slow speed stirrer for 3-5 minutes until the solution is uniform.
Wait for 3 minutes before application.

▪ Application

- Apply the first layer of **Revinex**® Flex FP by brush or spray with the consumption 1 - 1.25kg/m²/layer.
- Apply **Gavazzi**® glass mesh while the first layer is still wet .
- Wait for the first layer of waterproofing to dry on the surface, then spray or brush the second layer.

Waterproofing for Wet areas using **Revinex® Flex FP**

Images of applying steps
(for reference only)



Cleaning surface for preparation



Apply the first layer



Apply the second layer



Finish surface

• **INSTRUCTIONS FOR APPLYING OF FLOOR PENETRATION TUBE STOCK**

- Applying floor penetration tube stock and walls: Pour non-shrink pouring grout into the edge of the pipes. Then fill around the pipe with **Neotex® PU Joint**



Applying of floor penetration tube stock



Application of tiles and filling joints